

Features

- Featuring durable, beautiful water-based finishes that are better for the environment
- Four solid-wood drawers with dovetail joint construction
- Soft-close undermount drawer slides for smooth opening
- Full-extension 21" (533 mm) deep drawer provides ample storage
- Customize your storage with optional accessories such as electrical outlets, drawer organizers, and containers (sold separately)
- Coordinates with K-33561 Harken 13" (330 mm) cabinet pulls and K-99680-SH19 Harken 60" (1524 mm) roll-out tray (sold separately)
- Combines with Silestone™ prefabricated quartz vanity tops, backsplashes, and side splashes, and KOHLER sinks (sold separately)

Material

- Plywood and moisture-resistant MDF
- The nature of wood grain can cause variations in stain depth. Our expert craftspeople hand-apply the stain to blend these variations

Installation

- Professional installation recommended



Codes/Standards

EPA TSCA Title VI/CARB P2

KOHLER® One-Year Limited Warranty

See website for detailed warranty information.

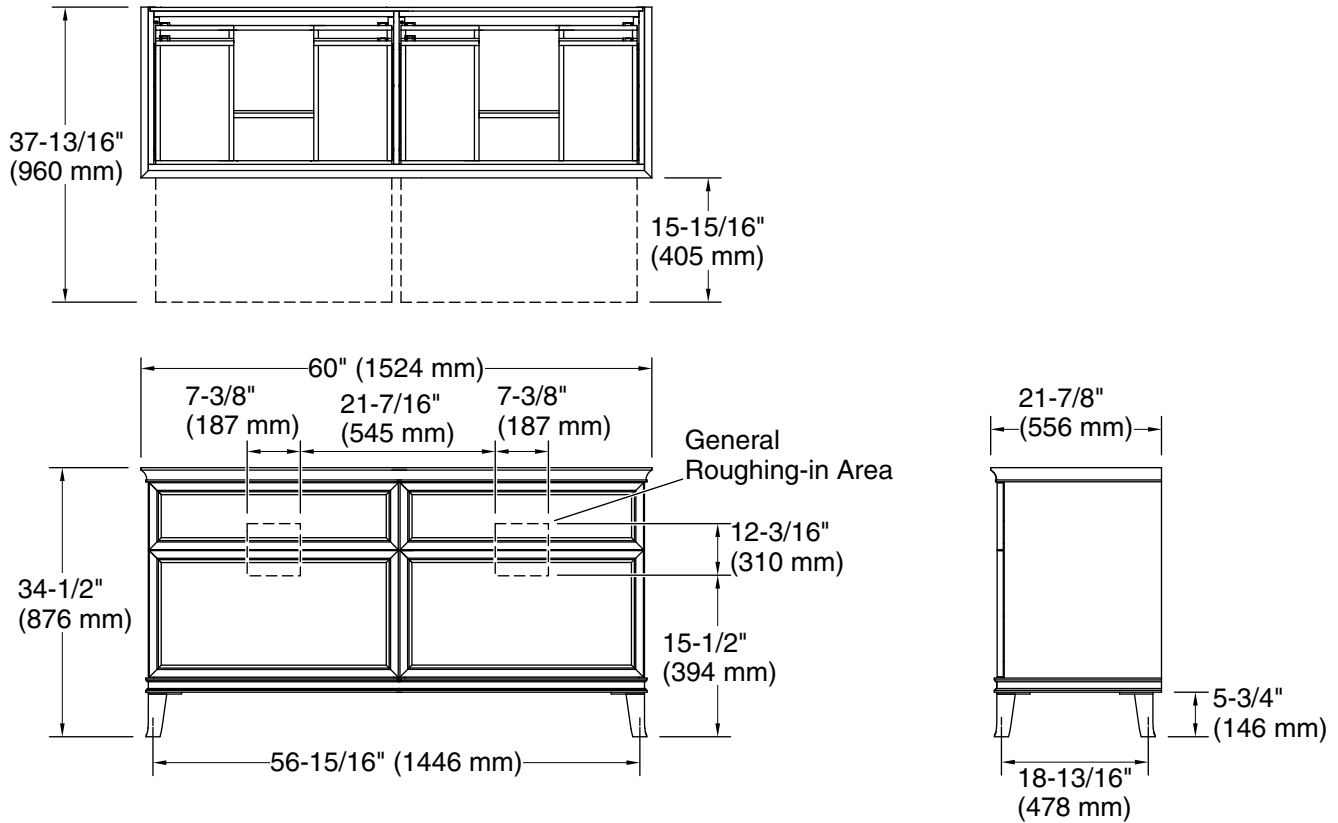
Available Colors/Finishes

Color tiles intended for reference only.

Color	Code	Description
-------	------	-------------

	1WA	Linen White
-------------------------------------------------------------------------------------	-----	-------------

	1WX	Grey Slate
-------------------------------------------------------------------------------------	-----	------------



Technical Information

All product dimensions are nominal.

Notes

Install this product according to the installation instructions.